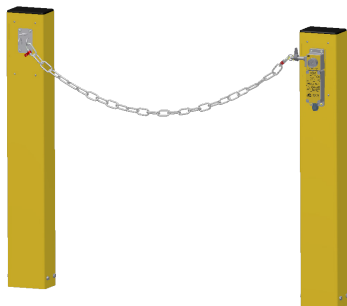


Salvo Bollard

User Guide



The Salvo Barrier comprises a pair of bollards, a chain kit and a choice of interlock (see table below). Each bollard is bolted to the warehouse floor, either side of the loading bay door.

Operation

The Salvo Barrier can be fitted with either of the following interlocks: SADL-AIS, SMDL AI or SADL (See descriptions below).

The SMDL-AIS (Salvo Manual Door Lock) is a mechanical interlock used to positively bolt the barrier in the closed position. The switch contacts can be used for controlling power to the dock leveller or other ancillary electrical devices e.g. traffic lights. The unit incorporates a locking bolt with chain which connects to the barrier. Only when the key is inserted and turned, can the locking bolt be disengaged, allowing the barrier to be opened. The turning of the key closes the switch contacts.

The SMDL-AI (Salvo Manual Door Lock) is a mechanical interlock used to positively bolt the barrier in the closed position. The unit incorporates a locking bolt with chain to the barrier which connects to the barrier. Only when the key is inserted and turned, can the locking bolt be disengaged, allowing the barrier to be opened.

The SADL is a keyless solenoid controlled Lock that locks and unlocks dependent upon the signal received from the Salvo Control Panel (SCP). The unit incorporates a locking bolt with chain which connects to the barrier. Only when the signal is received from the SCP, can the locking bolt be disengaged, allowing the barrier to be opened.

Precautions



To maintain high visibility, periodically clean the bollard.
From time to time, check that all fixing screws remain tight.

Maintenance

To maintain high visibility, periodically clean the bollard. From time to time, check that all fixing screws remain tight.

Specifications

Post Material	Powder coated carbon steel
Cap Material	UV resistant ABS, black
Dimensions	1,016mm x 100mm x 150mm
Weight	16kg
Colour	Safety yellow
Mounting Hardware	Supplied

Salvo Bollard

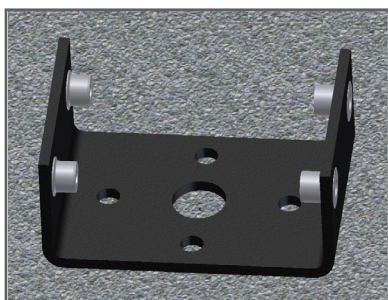
User Guide

Installation

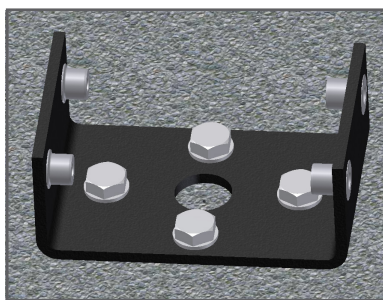
Fixing Instructions

Installation begins with bolting the footplate to the floor of the warehouse.

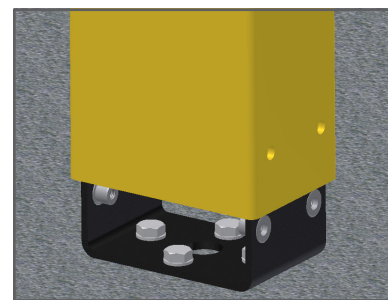
- ① Mark the position of the fixing holes on the warehouse floor and drill with a suitable masonry drill.



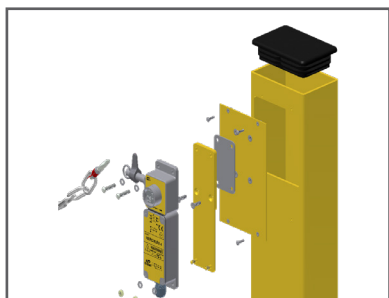
- ② Bolt the footplate to the floor using the fixings provided.



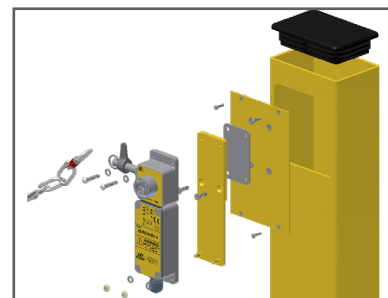
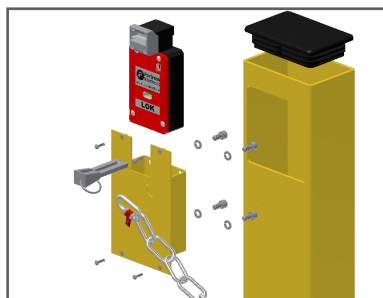
- ③ Lower the Bollard into place over the footplate.



- ④ Secure the Bollard to the footplate with the bolts provided.



- ⑤ Fit appropriate kit to Bollards, test accordingly to complete installation.



Order Information

Please advise correct part number when ordering.

(** mandatory information)

Part Number**	Description/System Components
006513	SCB-SMDL-AIS-1 c/w Chain Kit & Bollard
006514	SCB-SMDL-AIS-2 c/w Chain Kit & Bollard
006515	SCB-SMDL-AI-1 c/w Chain Kit & Bollard
006516	SCB-SMDL-AI-2 c/w Chain Kit & Bollard
006517	SCB-SADL c/w Chain Kit & Bollard