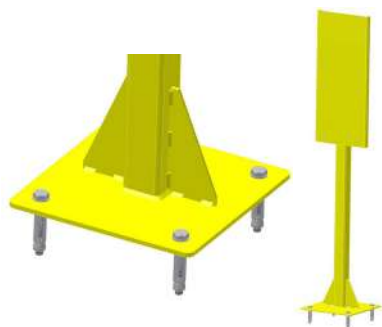


# Salvo Pedestal

## User Guide



The Salvo Pedestal is bolted to the floor of the yard and is used primarily for installations that have a narrow bay pitch and limited wall access and fixing space. The pedestal is used in conjunction with Salvo Control Panel and Salvo Enclosure, double box.

### Specifications

Post Material	Powder Coated Carbon Steel
Height	1.46m
Weight	15kg
Colour	Safety Yellow
Mounting Hardware	4 x M10 Rawl Bolts (supplied).

### Precautions



To maintain high visibility, periodically clean the pedestal. From time to time, check that all fixing screws remain tight.

### Maintenance

### Installation

The location of the Pedestal is affected by the position of the existing bay canopy and/or curtains. Consideration must also be given to the accidental opening of the trailer doors during movement of the trailer. (Ensure that the trailer doors cannot strike the pedestal).

Additional steelwork (uni-strut) should be used to connect the pedestal to the bay wall, thereby providing greater stability. The SCP cable can be tied to the steel work for protection and support.



### Order Information

Please advise correct part number when ordering.

**(\*\* mandatory information)**

**Part Number\*\***

006480