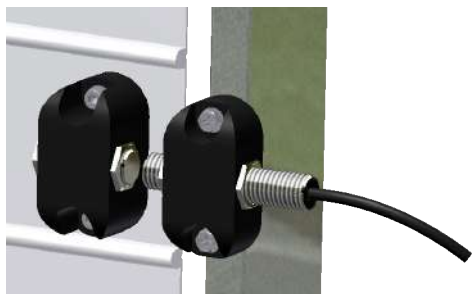


Salvo Safety Proximity Sensor

User Guide



The Salvo Safety Proximity Sensor is designed for use with Roller Shutter Doors, where mechanical Roller Switches cannot be used. It should be mounted in accordance with these instructions, as close to the door frame as possible, to prevent accidental damage.

Specifications

Proximity Switch

Contact Form/Style	Normally Open	
Switching Capacity (Resistive)	120 W/VA Max	
Switching Voltage	1500 VAC Max	
Switching Current	3.0 A. Max	
Carry Current	5.0 A. Max	
Breakdown Voltage	3000 VDC Min	
Contact Resistance	80 mOhms Max	
Switching Distance	15mm Min	
Operating Temperature Range	-20°C / +85°C	
Storage Temperature	-25°C / +90°C	
Case Material	Brass (Nickel Plated)	
Cable	2 x 0.5mm ² PVC covered Black,	insulated Brown / Blue.

Metal Threaded Magnet

Switching Distance	Normally Open
Operating Temperature	-20°C / +85°C
Storage Temperature	-25°C / +85°C
Case Material	Brass (Nickel Plated)

Precautions



Installation should be carried out by a competent and qualified person who has read and understood these instructions. Do not use this product as a safety or emergency stop device, or in any other application where failure of the product could result in personal injury. Handle with Care. Beware of Pinch points where the two halves align. Castell Safety recommends that this switch is wired in series with the door down limit switch. Where this is not possible two switches should be used (see Installation Wiring Diagram – IMS08992).

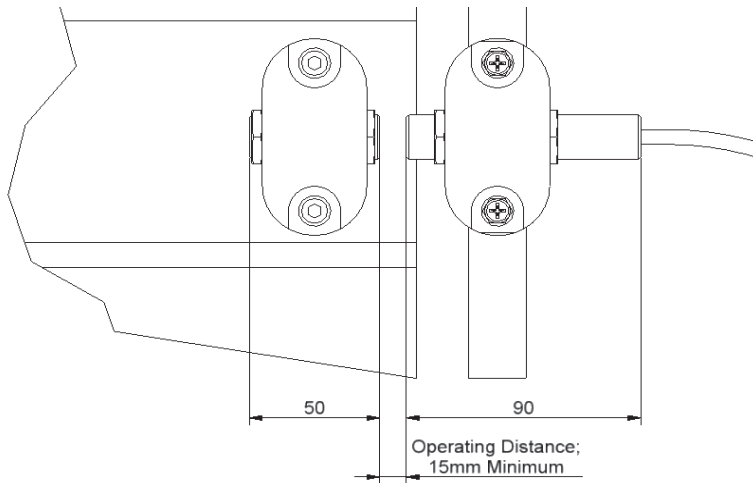
Maintenance

From time to time, check that all fixing screws remain tight.

Salvo Safety Proximity Sensor

User Guide

Installation



- 1 The magnet should be mounted low enough on the door to ensure it does not reach the point where the door begins to be rolled, when the door is fully opened.
- 2 Align the Switch bracket with the Magnet, mark and drill holes and fix to the frame.
- 3 Ensure the Switch and Magnet align when the door is fully closed.
- 4 Adjust the Switch and Magnet to meet the acceptable operating distance.



Brackets required to fit to Uninsulated Roller Shutter Door

Order Information

Please advise part number when ordering.
(** mandatory information)

Part Number**

007050