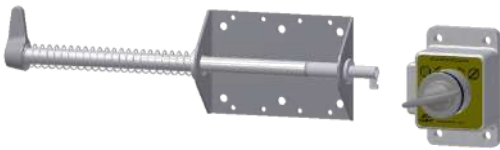


# SMDL-AI

## User Guide



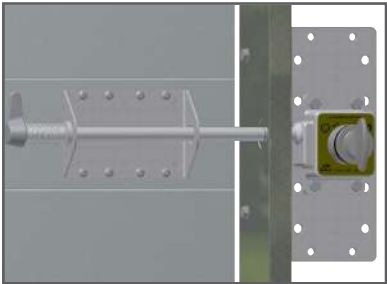
The SMDL-AI (Salvo Manual Door Lock) is a mechanical interlock used to positively bolt loading bay doors in the closed position. The unit incorporates a locking bolt which Passes through the door running rail and into the lock body. Only when the key is inserted and turned, can the locking bolt be disengaged, allowing the door to be opened.

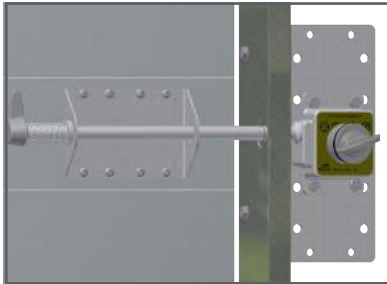
### Operation

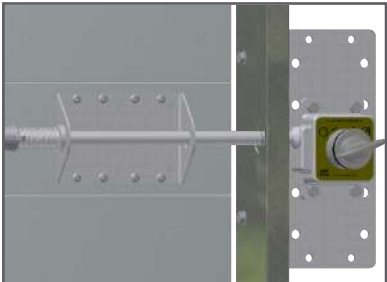
When correctly installed, the loading bay door is locked in the down position and the key is removed.

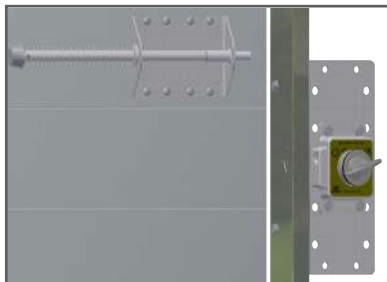
To operate, first insert the key and rotate clock-wise. The locking bolt can now be rotated on its axis and released.

The loading bay door can now be opened. With the door open, the key is retained in the lock. The dock leveller can now be operated as normal.

- 

1 Insert the key into the lock.
- 

2 Rotate the key clockwise.
- 

3 Rotate the locking bolt.
- 

4 Release the locking bolt and open the door.

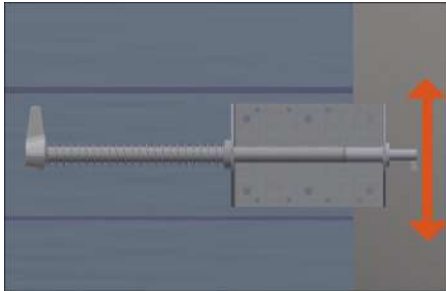
### Precautions



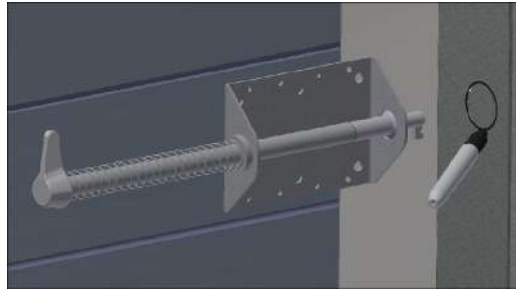
Installation should be carried out by a competent and qualified person who has read and understood these instructions.

### Installation

#### Fixing Instructions



**Step 01:** First ensure the door is fully closed. Determine the position of the locking bolt to ensure that either parts do not clash with existing door fixings. Suggested height between 1.5m and 2m from floor level.



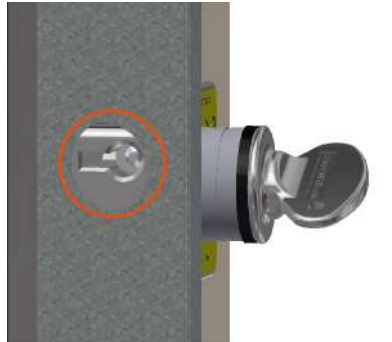
**Step 02:** Mark the position of the bolt clearance hole on the inside of the door running guide. Check that the lock and bolt do not clash with bay controls.



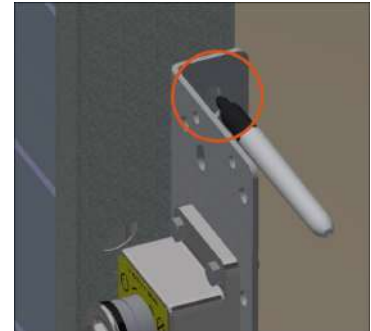
**Step 03:** Drill the clearance hole in the running guide using a 28mm tank cutter.



**Step 04:** Determine the position of the door, ensuring that the bolt entry hole aligns with the already secured locking bolt.



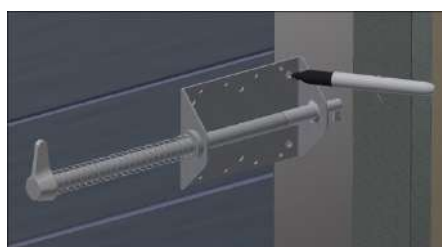
**Step 05:** Use the hole in the door running guide to align the lock.



**Step 06:** Mark and drill the positions of the mounting bracket holes.



**Step 07:** Fix the lock and bracket in place with the screws provided.



**Step 08:** With the door fully closed, engage the bolt into the door lock., through the previously drilled hole in the door running guide. Mark the positions of the fixing holes in the door.



**Step 09:** Drill holes and fix in place using bolts, washers and nuts, supplied. Trim excess bolt length if necessary.

### Specifications

Weight	1,1 kg
Bolt Material	Stainless steel
Housing Material	Stainless Steel
Lock Material	Stainless Steel
Mechanical Life	1,000,000 Cycles
Operating Temperature Range	-40°C to 140°C (-40°F to 284°F)

### Maintenance Instructions

Under normal operating conditions very little maintenance is required. If used in dusty conditions, blowing out with compressed air will prevent a build up of sediment in the locks.

The use of powdered graphite is recommended if necessary. Under no circumstances, however, should the locks be oiled or greased as this causes the locks to clog and malfunction. All locking systems should be checked regularly for correct operation, security of fixings and condition of keys etc.

The function of all keys that should be trapped must be checked under operating conditions, as should the ease of removal of released keys. In the event of malfunction, evident wear or damage, parts should be replaced or returned to Castell for repair if appropriate.

Users of interlock systems have a duty under Section 2 of the Health and Safety at Work etc Act 1974 to ensure that the systems are correctly installed and maintained in a satisfactory condition.

### Order Information

Please advise correct part number and symbol when ordering.

**(\*\* mandatory information)**

Part Number**	Description	Symbol**
006510	Hand 1, With Bolt	please advise
007041	Hand 1, With Chain Kit	please advise
006511	Hand 2, With Bolt	please advise
007043	Hand 2, With Chain Kit	please advise

