

# Salvo Steering Wheel Lock (SWL)

## User Guide

**Salvo™**



The Salvo Steering Wheel Lock helps ensure loading bay safety. The Salvo Steering Wheel Lock brings additional safety to loading bay procedures by locking onto a vehicle's steering wheel. The Salvo Steering Wheel Lock can be attached to vehicle steering wheels and will remain locked in place once the key is removed. When loading/unloading procedures are complete, the key may be replaced, and the Salvo Steering Wheel Lock can be removed allowing the vehicle driver to depart from the loading bay.

## OPERATION

1

Begin by placing the SWL onto the top of the steering wheel as shown.



2

Slide the SWL downward as shown, a green "OK" symbol will appear indicating the Key can be released.



3

Press cylinder inward using the key until it stops. Rotate key counter clock-wise 90 degrees to remove it.



4

The Salvo Steering Wheel Lock is now secured onto the steering wheel.



1 of 3

While every effort has been made to ensure the accuracy of the information provided, no liability can be taken for any errors or omission. Sentric Safety Group reserves the right to alter specifications and introduce improvements without prior notice.

SSG-SWL-EN-01-(06-24)

# Salvo Steering Wheel Lock (SWL)

## User Guide

**Salvo™**

### PRECAUTIONS



The Salvo Steering Wheel Lock will not safeguard a vehicle from drive-aways. Its purpose is to provide a warning that loading/unloading activity may still be ongoing.

It is not possible to remove the key when the SWL is not fitted.

Handle with care.

### MAINTENANCE

Apply lubrication to the inner plungers. The recommended lubricant is Armna G4789 or equivalent. The recommended lubrication interval is 6-12 months as required. Keeping the Salvo Steering Wheel Lock clean will ensure long and reliable service.

### TECHNICAL DATA

<b>Working Temperature</b>	NA
<b>Weight kg/lbs</b>	3,0 kg / 6.61 lbs
<b>Housing Material</b>	PU ABS/PU Shore 90A, Aluminium, Stainless Steel
<b>Lock Material</b>	Stainless Steel
<b>Steering Wheel Size</b>	Min. 43 cm/ 16.9 inches External Diameter; Min. 16.5 cm/ 6.5 inches external distance to top of centre of steering wheel

# Salvo Steering Wheel Lock (SWL)

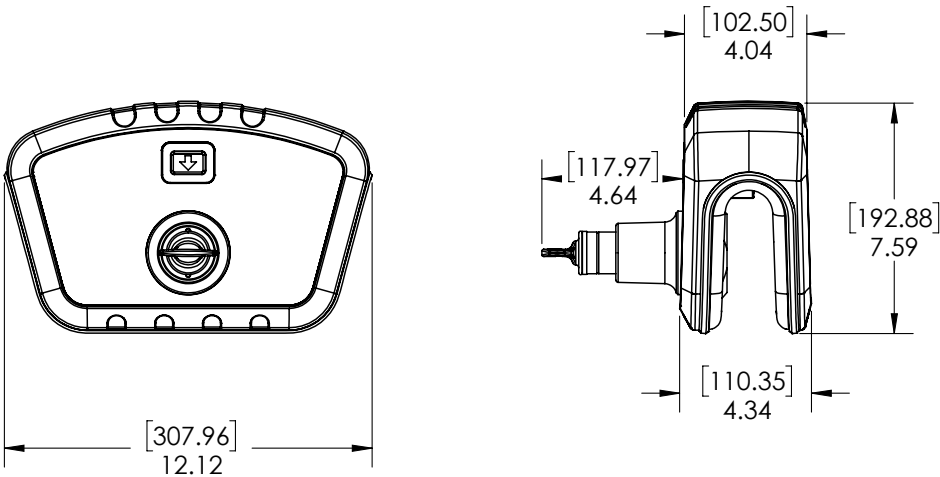
## User Guide

**Salvo™**

### DRAWING

#### Dimensions:

All dimensions are in inches, with bracketed dimensions in millimetres.



### PRECAUTIONS

Please advise part number and lock portion symbol when ordering.

(\*\* Mandatory information) (Part number is Pre-Production number) (\*\*\*)Lock portion symbol)

**Part Number\*\***

**Symbol\*\*\***

DDS02422

please advise